



**50 X 100 Prime Corner Frontage  
Space available 10,000- 25,000 Sq. Ft.**

## **In the heart of Sunset Park**

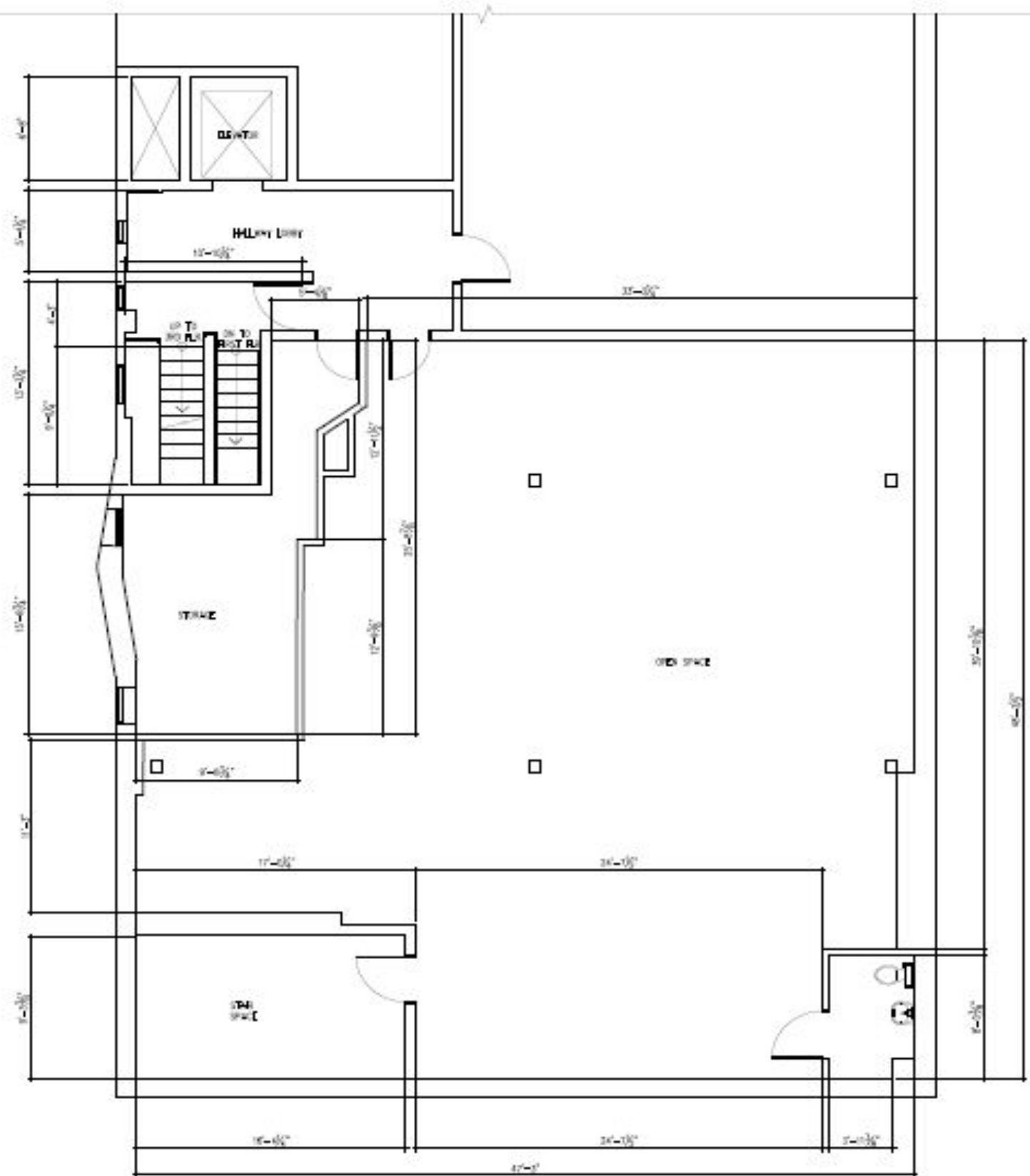
- **Space can be partitioned to 2,500 SF or taken as an entire building at 25,000 SF**
- **Retail space has a capacity of 100 PSF live load and 15 PSF superimposed dead load(not including weight of structure)**
- **Minutes away from Maimonides Medical Center, New York- Presbyterian Brooklyn Methodist Hospital, University Hospital-Brooklyn, NYU Langone Hospital & more**
- **Nearby transportation: 4th Ave. train station servicing the N/R/W lines. The B63 bus stop is at the property door, and the B11, 870, & B37 are all nearby**

**Phone: 201-680-7100**

**Email: [Leasing@SalmanCapital.com](mailto:Leasing@SalmanCapital.com)**

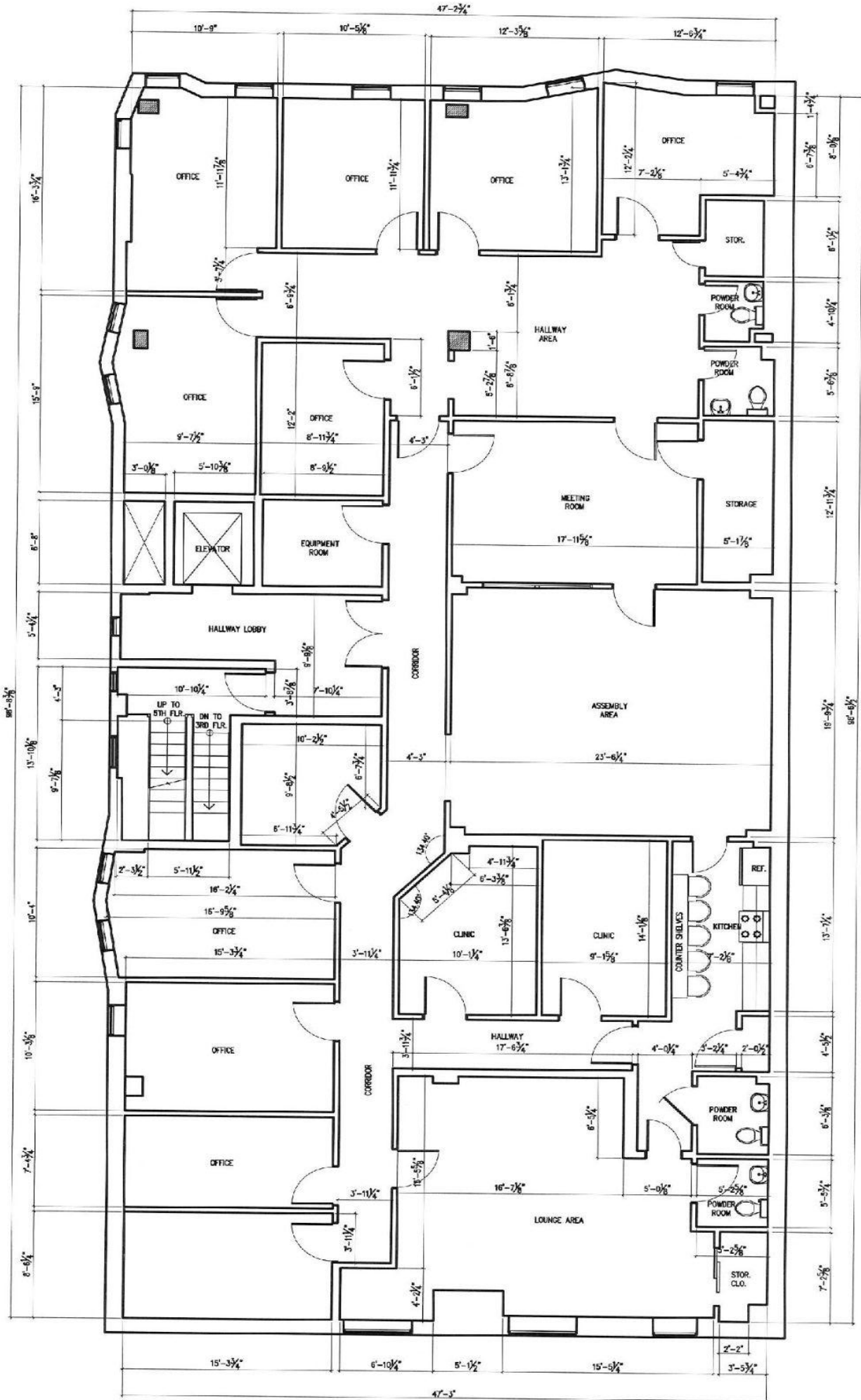
**[www.SalmanCapital.com](http://www.SalmanCapital.com)**





EXISTING THIRD FLOOR PLAN

BROOKLYN, NEW YORK  
 PROJECT: RENOVATION ALTERATION  
 TO EXISTING OFFICE CLINIC



EXISTING FOURTH FLOOR PLAN